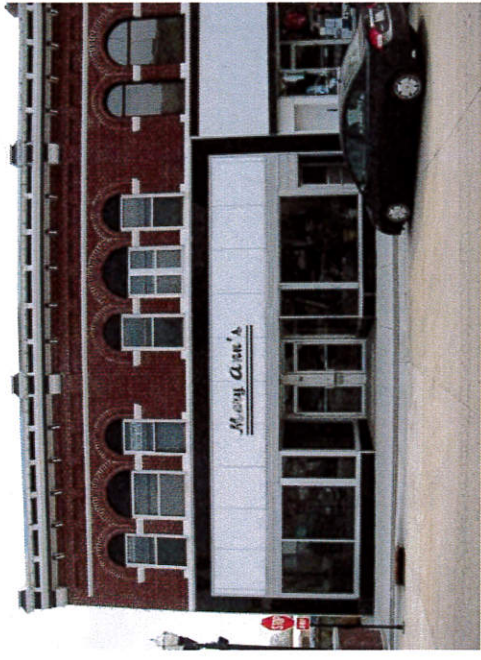


Main Street Iowa
Proposed Facade Rehabilitation
Homestead Coffee Bakery and Cafe
Jefferson, Iowa
Project #03613
July 9, 2013



Existing

Proposed



NOTES:

- ▶ Install windows in the arches on the second floor – trim should match existing and windows should fill existing opening.
- ▶ Install transom windows, rhythm is taken from existing material. If original transom windows are intact and rhythm differs, use original rhythm. Transom frame materials should match storefront frame.
- ▶ Retain and repair black structural glass. www.vitrolitespecialist.com
- ▶ Install new sign in transom. Shown here is window decal sign. Color should match store logo. Sign can be lit from inside.
- ▶ Sign on right window is also a decal sign, color should match store logo. Inset shows option flush mounted sign for Mocha Tan, colors should match store logo. Either option works, owner preference.